

Concrete Adjusting Rings
 Limited to (3) Rings.
 Maximum Combined Height
 of 12". Rings Must be Butyl
 Rubber Coated With Plastic Wrap
 Cover.

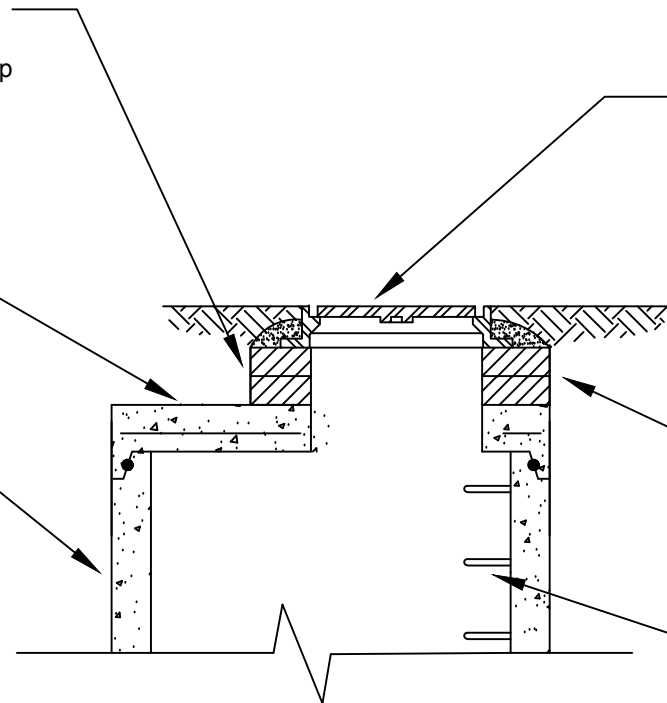
Manhole Frame and Cover
 Heavy Duty: Neenah R-1642A or Equal
 Watertight: Neenah R-1916-F or Equal

Flat Slab Top Shall Be Used In
 Lieu of Eccentric Cones For
 Shallow Manholes or as
 Directed by The Utility.

All Manhole Sections Must
 Have Minimum 10 Mil
 Bituminous Coating Applied
 To Entire Exterior.

Kent Seal or Equal Between
 Casting, Adjusting Rings and
 Manhole Section

Remove Manhole Steps If
 Requested By Utility.



NOTES:

Flat Top Manholes Will Not Be Allowed In Traffic Areas

Additional Details Not Shown Shall Be The Same As
 Details For Type I & II Manholes

City of Carmel Utilities Standard Details		Title: FLAT TOP MANHOLES	
Date: January 2016	Scale: Not To Scale	Drawing: CS 9	Page 7