

Manhole Frame and Cover  
 Heavy Duty: Neenah R-1642A or Equal  
 Watertight: Neenah R-1916-F or Equal

Concrete Adjusting Rings  
 Limited to (3) Rings.  
 Maximum Combined Height  
 of 12". Rings Must be Butyl  
 Rubber Coated With Plastic Wrap  
 Cover.

Set Barrel Joints With Gasket  
 Equal to ASTM C-443 And On  
 Minimum of 1" Wide Kent Seal

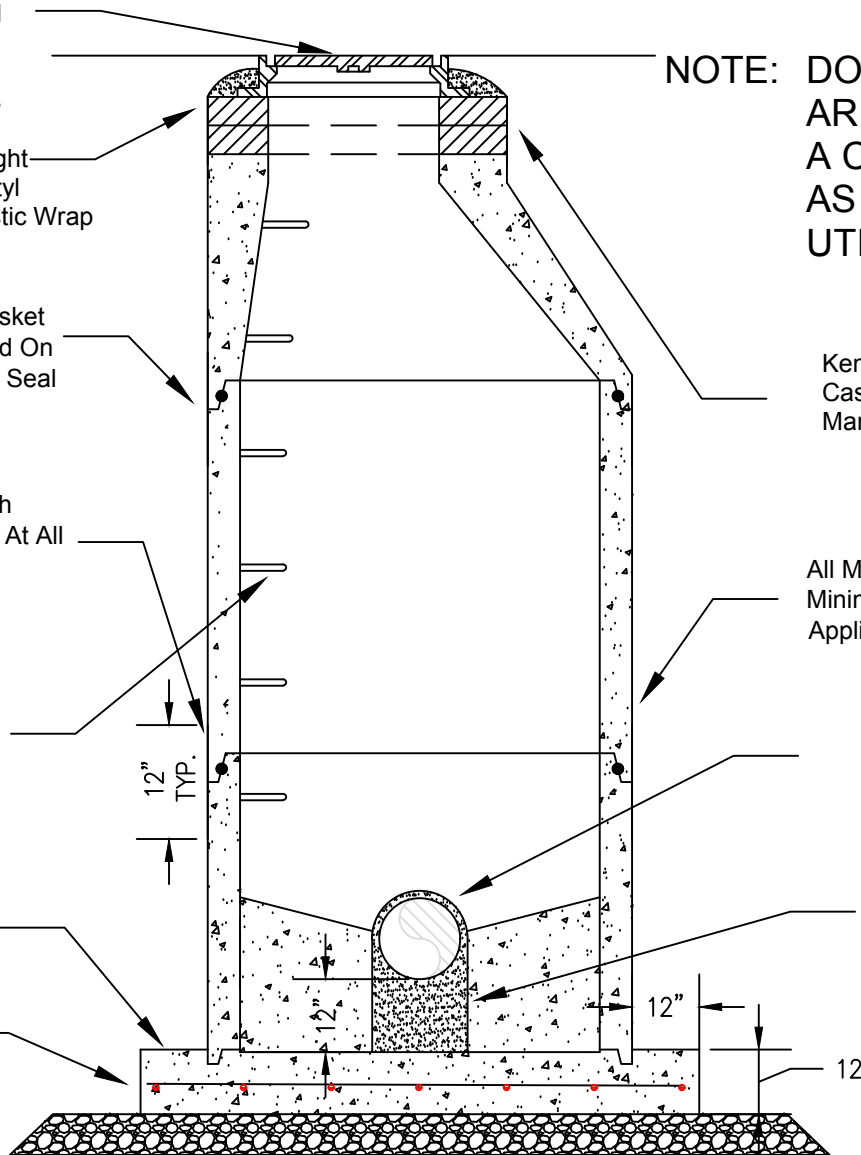
Butyl Rubber Coating With  
 .8 Mil Plastic Wrap Cover At All  
 Joints And Lift Holes  
 Typical: 12" Wide

Remove Manhole Steps  
 If Requested By Utility

Poured In Place Concrete Base

Minimum Reinforcing of 12" Slab  
 #5 Rebar @12" EW

6" Minimum Compacted #8 Stone



**NOTE: DOGHOUSE MANHOLES  
 ARE ONLY ALLOWED ON  
 A CASE BY CASE BASIS  
 AS APPROVED BY THE  
 UTILITY**

Kent Seal or Equal Between  
 Casting, Adjusting Rings and  
 Manhole Section

All Manhole Sections Must Have  
 Minimum 10 Mil Bituminous Coating  
 Applied to Entire Exterior.

Existing Sanitary Sewer To Be  
 Protected and Supported During  
 Excavation

Contractor Shall Seal Opening  
 Around Pipe With Non-Shrink  
 Grout

City of Carmel Utilities  
 Standard Details

Title: DOGHOUSE  
 MANHOLE

Date: January 2016

Scale: Not To Scale

Drawing: CS 5

Page 8